

S&S

Creativity unlimited

DERWENT

STEP-BY-STEP DEMONSTRATION

DERWENT INKTENSE

Vibrant colours, intense washes

Holiday Photos (Finished drawing 4½" x 6")



MATERIALS USED:

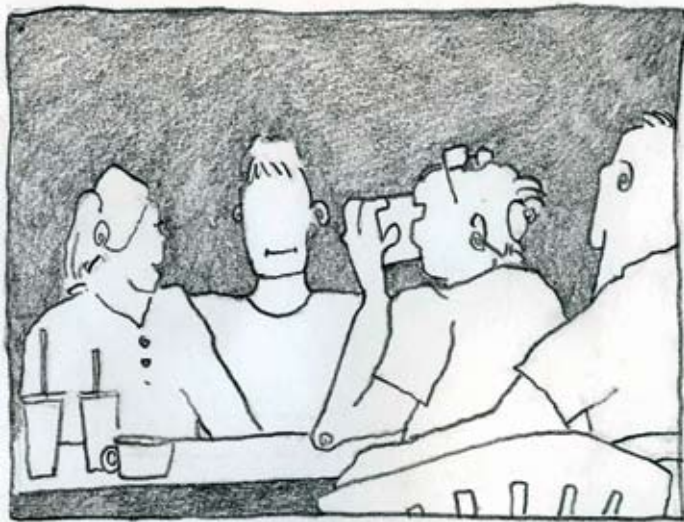
Derwent Inktense pencils used:
0400 Poppy Red, 1200 Sea Blue,
1700 Mustard, 1800 Baked Earth,
2000 Bark, 2400 Outliner

Smooth white cartridge paper 120lbs
No. 4 brush

INTRODUCTION

This exciting range of pure, vibrant, watersoluble ink pencils combines the brilliant intensity of pen and ink with the versatility of line and wash.

Ideal for creating bold, expressive images or subtle, translucent wash effects. Inktense is available in 71 jewel-like colours plus a non-soluble outliner.



1 Using 2400 Outliner transfer the line drawing as shown and shade evenly the background. The outline will remain when hydrated as the Outliner is not soluble. This acts as a strong drawing base.



2 Using 1200 Sea Blue and a firm pressure cover all of the background sections previously covered with the Outliner. With a lighter pressure cover the shirt, sunglasses and lightly introduce some pigment to the chair sections.

The more pressure, the deeper the colour will be when hydrated.
Using 1700 Mustard apply pigment to the girls hair and the chairs.

NOTE: An added beauty of these Inktense Pencils is that once they dry, as long as all the pigment is washed out, the colour is permanent.

For more tips, techniques and product information visit www.pencils.co.uk

S&S

Creativity unlimited

DERWENT

STEP-BY-STEP DEMONSTRATION

DERWENT INKTENSE

Vibrant colours, intense washes

Holiday Photos (Finished drawing 4½" x 6")

Drawings and techniques by Fiona Peart



3 Using 0400 Poppy Red firmly apply pigment to the girls top and behind the chair, hair tie and the milk shakes, then very gently apply a light layer over all of the skin tones.

Using 1800 Baked Earth apply to the hair of the girl on left and chairs. Then apply a light layer on all the skin tones.

Apply 2000 Bark to hair, camera and the underside of the table.

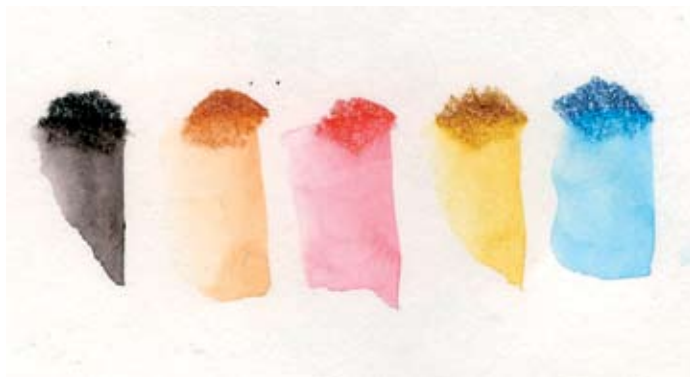


4 Applying the water – using a no. 4 brush and keeping it wet, begin on all of the skin sections. It is best to work from light to dark, apply the water then leave it, let the pigments mix naturally with the water. This will result in a more painterly effect.

Hydrate the pink top, then the hair and the chairs, then the blue top and the background areas.

All areas will remain wet, the edges of the colour will soften slightly and only the outliner will define some of the shapes. The blue of the background will seep into the skin tones and hair in places.

Finally hydrate the milk shakes. These are the only shapes not attached to something else, all other sections will appear almost wet in wet in parts. A wonderful effect!



Once hydrated the colours intensify like inks remaining transparent and luminous.

For more tips, techniques and product information visit www.pencils.co.uk