

# SUBLIMATION OF COLOUR WITH COLOURCRAFT TRANSFER PAINTS

There are a number of ways this product can be used.

- 1.Brush the colour directly from the jar onto cartridge paper – solid block of colour
- 2.Paint your own design/image onto cartridge paper.
- 3.Paint over a photocopied image (not suitable for laser prints).

The colours will appear dull on the paper.

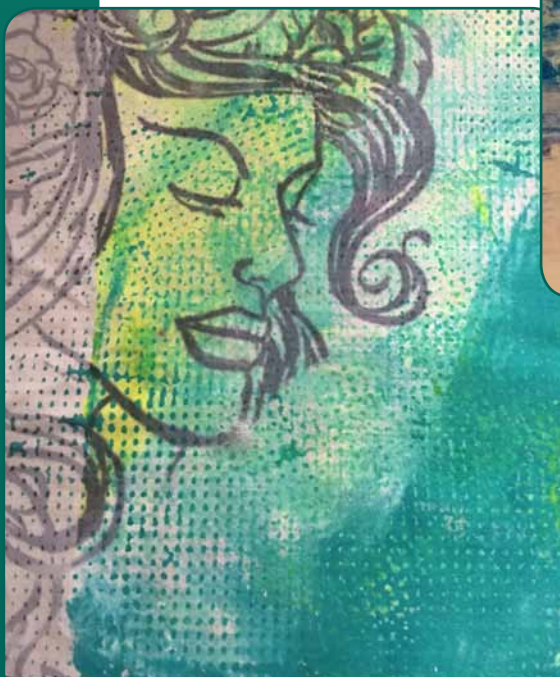
Once paint is dry on the paper, (you can dry the paint with a hair dryer to hasten the process.)

Place your painted paper face down onto any fabric and press with an iron. Colours will transfer brighter onto synthetic fabrics.

The heat will transfer the paint onto the fabric surface.

If using a solid block of colour you can place items onto the fabric surface to block out the colour. Eg.leaves, paper cut outs, lace etc and work into these with other mediums.

Images can be printed over other art techniques. Eg. Gelli plate print onto fabric and when the print is dry transfer image over.



**S&S**  
Creativity unlimited™

